



VMware Infrastructure 3

Roland Kurz – Stemmer GmbH – Niederlassung Stuttgart / Empfingen



Storage

Storage



Agenda

- VMWare ESX 3 und VirtualCenter 2
 - Neue Features
 - Produkte und Lizenzmodell
- VMWare ESX 3 Best Practise
 - Storageanbindung
 - Anbindung über NFS
 - Anbindung über iSCSI
 - Vergleich FibreChannel vs iSCSI vs NFS
- VMWare VirtualCenter 2
 - Funktionalität
 - Resourcepools (DRS)
 - Hochverfügbarkeit (HA)
 - Consolidated Backup (CB)
- Migration von VMWare ESX 2 / VC 1 nach VMWare ESX 3 / VC 1



VMware ESX 3.0 und VC 2.0



Storage

Storage



ESX 2.x Roadmap

- ESX 2.5.2 Patch4
 - NIC Intel 1000P Dual PCIExpress supported
- ESX 2.5.3
 - New COS based on RH AS 2.1 (Security issues solved)
- ESX 2.5.4
 - New Hardware support added (GA Q4 2006)
 - Support of LSI1068, Intel 1000P Dual, BCM 5706 / 5708
- ESX 2.5.5 (Termin offen)
 - New Hardware support added (Read of vmfs 3 ???)
- VC 1.3.1 Patch 1
 - DualCore Processes are showed correctly
 - Cold Migration of VM with more then one disk on different LUN solved



Storage



ESX 3.0 – VC 2.0 Überblick (1)

- much better Performance – VM boot faster – less load when booting VM
- NEW COS OS RH ES 3.0 – COS is now a VM
- The vmkernel owns all HW – no sharing with COS (COS is a VM)
- No direct support of Intel VT and AMD Pacifica*
- Support von 64Bit Guest OS in einer VM, 4 CPU vSMP, 16GB RAM
- Support von NAS (NFS) und iSCSI
- Clusters (HA, DRS)
- Backupfeatures mit Consolidated Backup (CB)
- License Server – License model

*planned in next version – additional performance gain



Storage



ESX 3.0 – VC 2.0 Überblick (2)

- Locked W2K and W2K3 Systems are now also stopped during ESX shutdown
- RDM supported when ESX boots from SAN
- VM Tools mass upgrade possible over “cmdline” from VC Server
- One VI Client for ESX and VC (no Web MUI)
WebCenter for heterogeneous Admin over Browser (limited function)
- No double registered VM in VC
- All config relevant files are at the same place as the .vmdk file
- Support of more then one SnapShot (Snap of Memory selectable)
- Hot-Add of LAN-Adapters and SCSI Disk Resources
Support in Guest OS required



Storage

Storage



Requirements VI3 ESX-Host

- Prozessor: max. 16 SingleCore mit HT
 max. 8 DualCore mit HT
 max. 16 DualCore **ohne** HT
 max. 128 virtuelle Prozessoren
- RAM: 64GB RAM
- Adapters: max. 64 Adapter aller Typen inkl. HBA und NIC
 max. 16 HBA's mit max. 15 Targets pro HBA
 max. 20 GB oder 10/100 Ethernet-**Ports**
 max. 1024 Ports pro virtuellem Switch
- Storage: max. 128 VMFS-Volumes a 2TB



Storage

Storage



Requirements VM

Virtual Prozessor: max. 4 CPU Intel Pentium II and later. (dependent on System Processor)

Virtual Chip Set: Intel 440BX-based Motherboard with NS338 SIO Chip

Virtual BIOS PhoenixBIOS™ 4.0 Release 6

VM Memory: max. 16GB (WinNT max. 3,45GB)

Virtual Adapters: max. 6x virtual PCI-Slots

Virtual NIC: max. 4x GBE

Virtual FDD: max. 2x 1,44MB FDD's

Virtual CD: max. 4x CD-LW's

Legacy Devices: max. 4x serielle Ports

max. 3x parallele Ports

Achtung: Swap ist jetzt nicht mehr Common sondern pro VM!!! Bitte Beachten beim LUN-Sizing!!! Swapgrösse = vRAM-Grösse



Storage

Storage



Release Notes VI 3.01 (GA 03. October 2006)

- Support for selected 64-bit guest operating systems.
- Support for servers based on the AMD 2000/8000 series processors and Intel Xeon 7100 (codename Tulsa) series of processors.
- A self-certification program for iSCSI arrays.
- Support for iSCSI arrays such as EqualLogic PS300 and NetApp FAS3000.
- Addition of German and Japanese product versions.
- Critical bug fixes related to ESX Server 3.0 and VirtualCenter 2.0.
- Experimental support for iSCSI 4050/4052 HBA from Qlogic.
- Improved upgrade support from Virtual Infrastructure 2 to VMware Infrastructure 3.
- Support for Symmetric Multiprocessing (SMP) on Windows XP virtual machines

http://www.vmware.com/products/beta/esx-vc/vi301/releasenotes_vi3.html



Storage



ESX 3 Produkte (Lizenz pro 2 Socket)

	Starter	Standard	Enterprise
ESX Server 3	X ■ NAS or local storage ■ Limited to servers with ■ up to 4PCPU ■ up to 8GB physical memory	X	X
VC Agent	X	X	X
VMFS		X	X
VSMP		X	X
VMotion			X
HA			X
DRS			X
Consolidated Backup			X
Target Market	SMB / Branch offices / Depts		



Storage



Virtual Infrastructure (VI) Produkte

Name	Lizenz
VMware VirtualCenter Management Server	Per Server
VMware VMotion	
VMware HA	Per 2 Sockets
VMware DRS	
VMware Consolidated Backup	



Storage

Storage



License Server

- License Server
 - FlexLM for Managed license
 - like Citrix Presentation Manager – same Server can be used
- Unmanaged License as alternative to Managed License with FelxLM



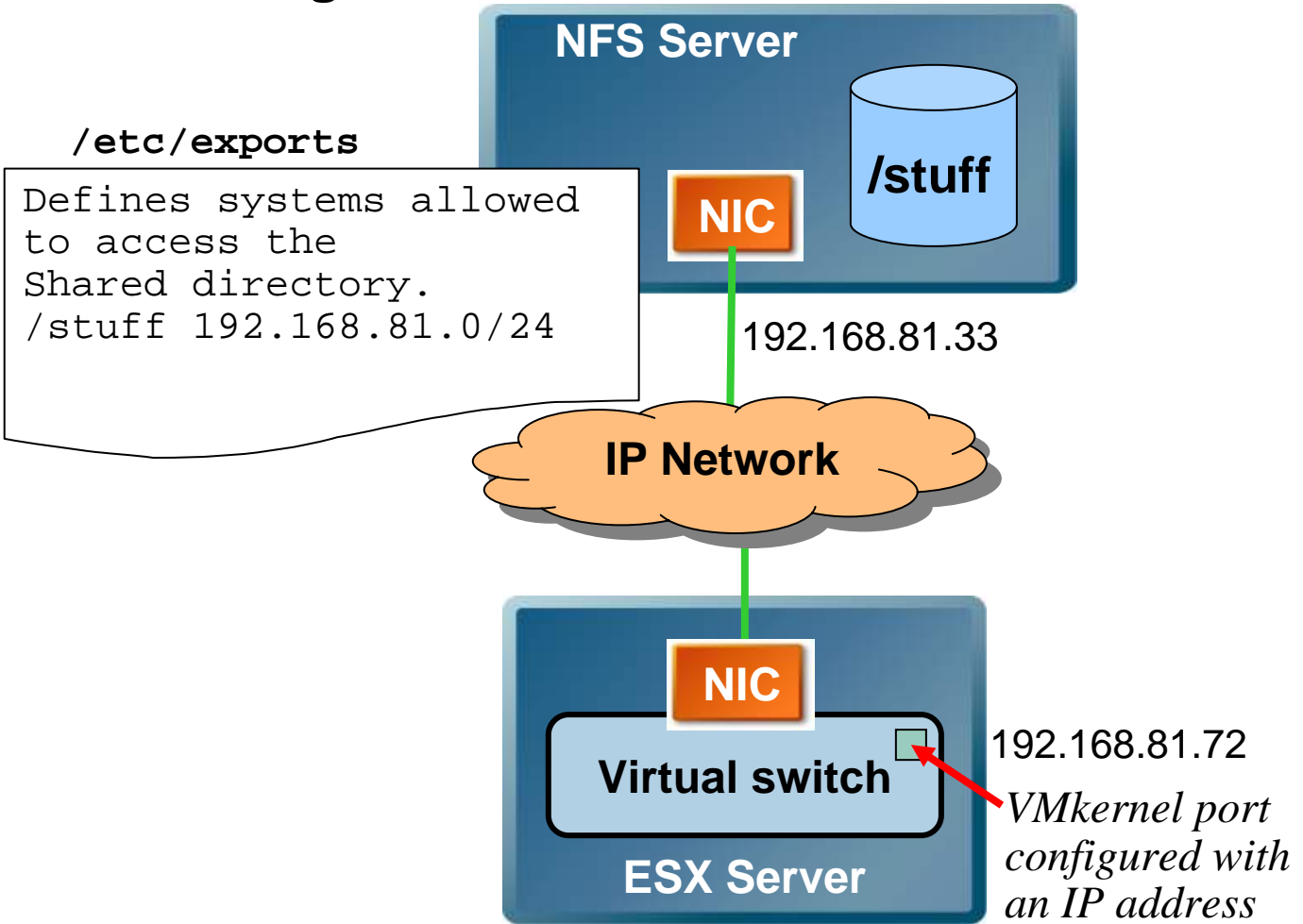
Storage-Anbindungen



Storage



Anbindung über NFS



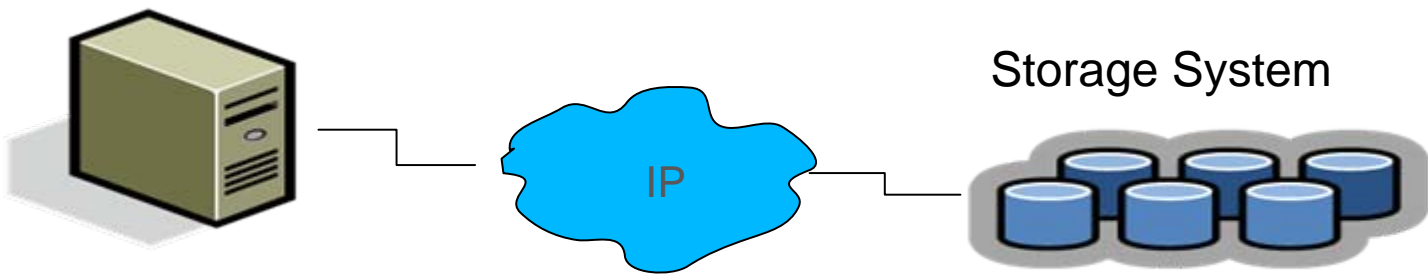


Storage



Anbindung über iSCSI

- A SCSI transport protocol, enabling access to storage devices over standard TCP/IP networks
 - Maps SCSI block-oriented storage over TCP/IP
 - Similar to mapping SCSI over Fibre Channel



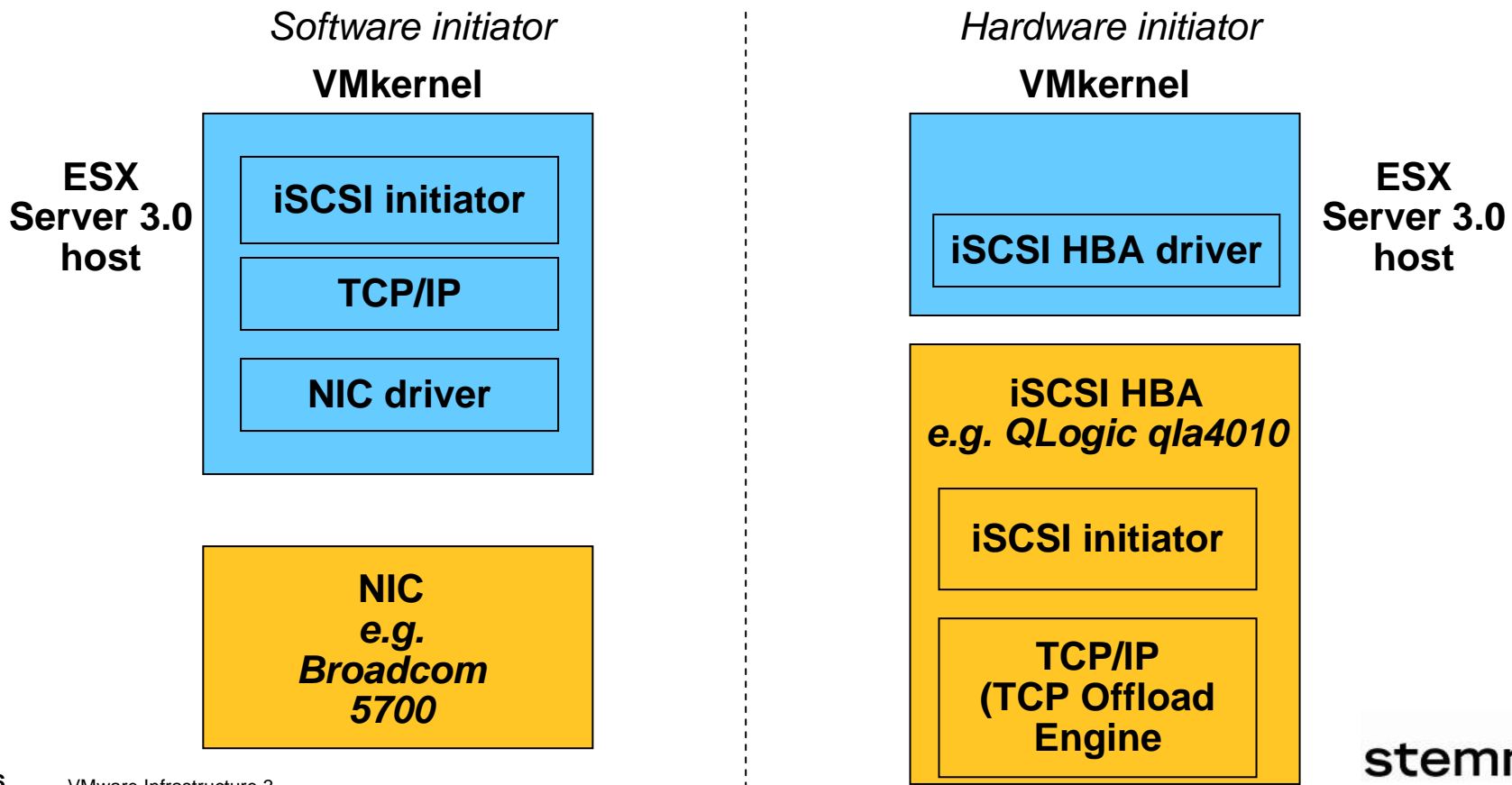


Storage



iSCSI Connectivity

- ESX Server supports both software and hardware initiators





Storage

Storage



Software initiator vs. Hardware initiator

- Software initiator
 - Use existing NICs
 - Use native vmkernel stack
 - Used when performance IS NOT an issue, as server and application performance can degrade significantly!
 - Used when cost IS an issue
 - Used when no PCI slots are available
 - Used for simple connectivity to storage or tape backup

- iSCSI storage adapters (hardware initiator)
 - Uses less ESX Server resources, especially CPU
 - Initially supported adapter-Qlogic qla4010



Storage

Storage



Verwendung von iSCSI

- Boot ESX Server from iSCSI storage
 - Using hardware initiator only
- Create a VMFS on iSCSI LUN
 - To hold VM State, ISO images, and templates
- Allows VM access to a raw iSCSI LUN
- Allows VMotion migration of a VM whose disk resides on iSCSI LUN



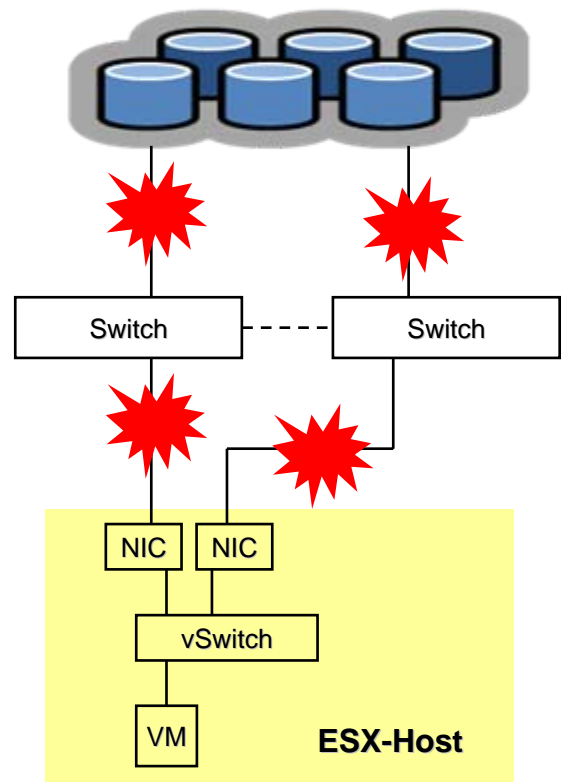
Storage



Pfadredundanz bei iSCSI

- Redundanz in ESX Konfigurierbar
 - Beide NIC's aktiv
 - Aktiver NIC und Passiver NIC
- Redundanz über Ethernetswitch
 - z.B. Port Channeling bei Cisco
- Bei Ausfall eines Pfades sind im Betrieb keine Umschaltzeiten spürbar. Vergleich zu FibreChannel: Umschaltzeiten bis zu 60s je nach Stagesystem

Storage System





Storage

Storage



Unterstützte StorageSysteme für iSCSI

Network Appliance

- FAS 200 series (250, 270) Data ONTAP 7.x current
- FAS 900 series (920, 940, 960, 980) Data ONTAP 6.5.3 p4
- FAS 3000 Serie Data ONTAP 7.x current

EMC

- Celerra/NS700/500

Fujitsu Siemens

- AX100i
- CX300i
- CX500i



Fibre Channel vs. iSCSI vs. NAS



Storage



Vergleich FibreChannel vs. iSCSI vs. NAS (NFS) (1)

<i>Technology</i>	<i>Protocols</i>	<i>Transfers</i>	<i>Interface</i>	<i>Performance</i>
Fibre Channel	FC/SCSI	Block access of data/LUN	FC HBA	High (due to dedicated network)
iSCSI	IP/SCSI	Block access of data/LUN	iSCSI HBA or NIC	Medium (depends on integrity of LAN)
NAS	IP/NFS	File (no direct LUN access)	NIC and IP switches	Medium (depends on integrity of LAN)

For best performance and security, consider putting iSCSI and NAS on separate and isolated IP network!



Storage



Vergleich FibreChannel vs. iSCSI vs. NAS (NFS) (2)

<i>Technology</i>	<i>Boot VM</i>	<i>Boot ESX Server</i>
Fibre Channel	Yes	Yes
iSCSI	Yes	Yes
NAS	Yes	No



Vergleich FibreChannel vs. iSCSI vs. NAS (NFS) (3)

<i>Technology</i>	<i>Clustering</i>	<i>Raw Disk</i>	<i>RDM</i>
Fibre Channel	Yes	Yes	Yes
iSCSI	No	Yes	Yes
NAS	No	No	No



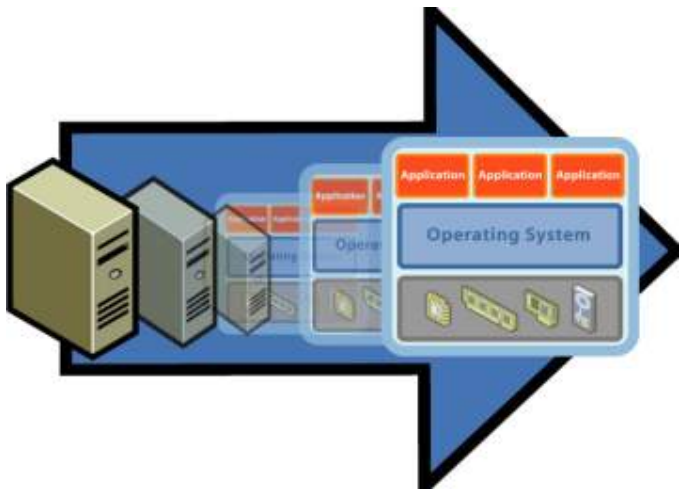
Funktionalität VC 2



Storage



Funktionalität von VC



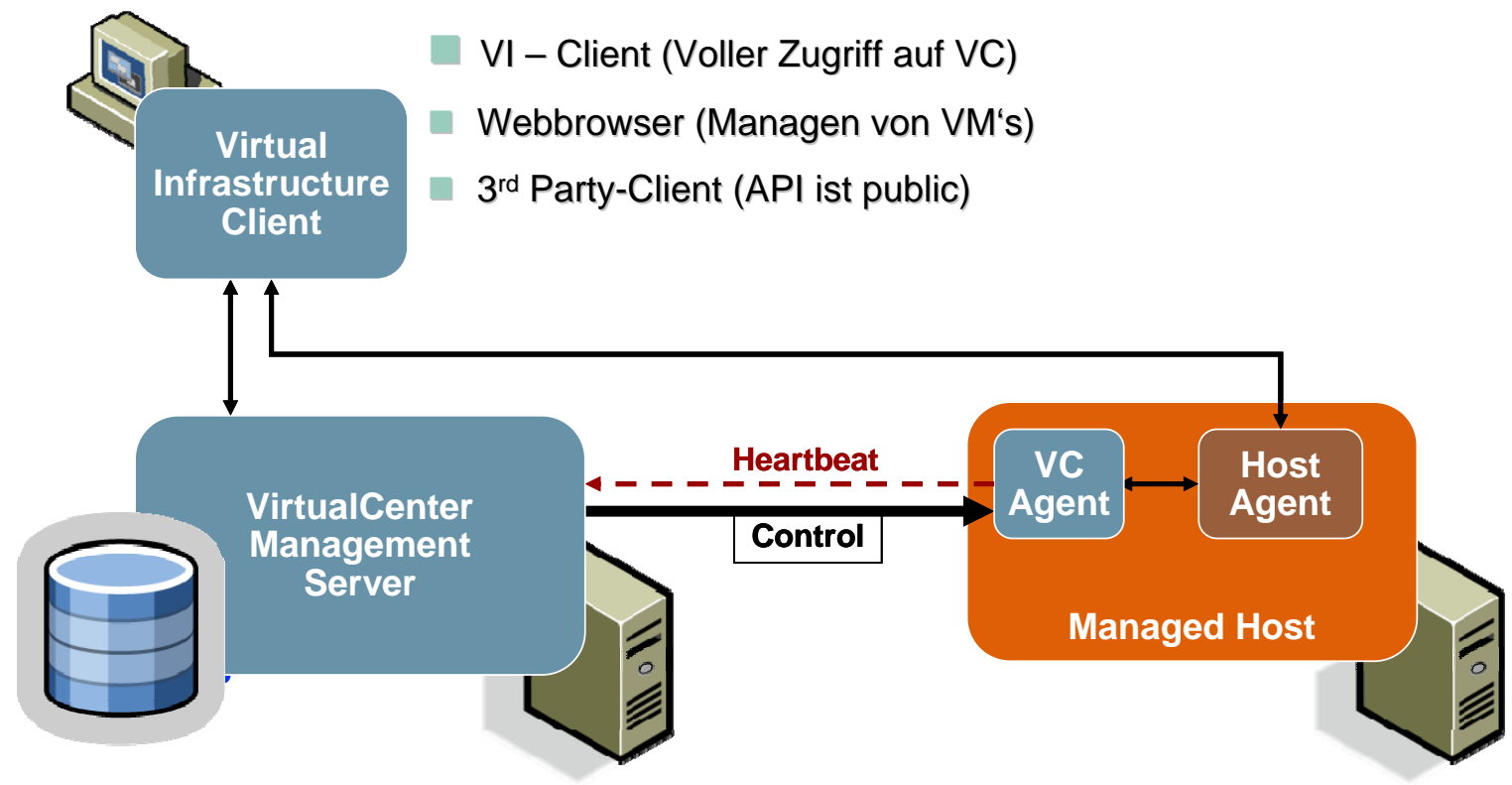
- Virtualization everywhere
 - Extensions for cost-sensitive environments
 - Bigger, higher-performance VMs
 - Expanded guest OS support
- Enterprise manageability
 - Simplified management
 - Enterprise scalability and security
- New services in distributed virtualization layer
 - DRS and resource pools
 - VMware HA
 - Consolidated backup



Storage



Client für Zugriff auf ESX-Host und VC





Storage



Screenshot der Inventory-Ansichten

Hosts & Clusters

- New Datacenter
 - vCluster
 - pmstaff-esx1.eng.vmware.com
 - pmstaff-esx2.eng.vmware.com
 - PMstaff
 - rh9-bus_2
 - rh9-bus_3
 - rh9-lsi_2
 - rh9-lsi_3
 - w2kas-busC
 - w2kent-busB
 - w2kent-busC
 - w2kent-busD
 - VI-PM
 - Production VMs
 - new name
 - PMwiki
 - Sugar (win2k3)
 - Twiki4
 - VirtualCenter Server (Win2k3)
 - VM Importer 2.0 Sandbox (Win2k3)
 - w2k3ent-lsi
 - Test - Dev VMs
 - pmstaff-esx1-rh9-lsi
 - w2kas-bus
 - w2kas-busB
 - w2kent-busA

Virtual Machines & Templates

- New Datacenter
 - new Datacenter
 - pmstaff-esx1-rh9-lsi
 - PMwiki
 - rh9-bus_2
 - rh9-bus_3
 - rh9-lsi_2
 - rh9-lsi_3
 - Sugar (win2k3)
 - Twiki4
 - VirtualCenter Server (Win2k3)
 - VM clone
 - VM Importer 2.0 Sandbox (Win2k3)
 - w2k3ent-lsi
 - w2kas-bus
 - w2kas-busB
 - w2kas-busC
 - w2kent-busA
 - w2kent-busB
 - w2kent-busC
 - w2kent-busD

No templates in hosts & clusters view







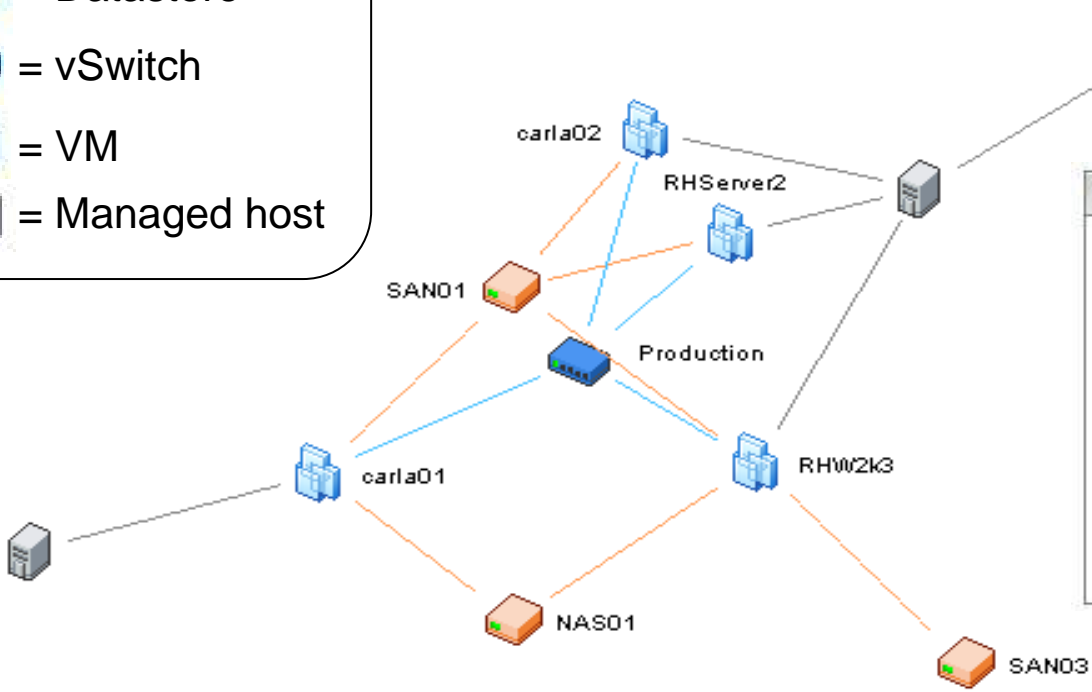
Storage



VI Übersichtskarte

Legende

-  = Datastore
-  = vSwitch
-  = VM
-  = Managed host



Map Relationships:

Virtual Machine Resources ▾

Host Options

- Host To VM
- Host To Network
- Host To Datastore

VM Options

- VM to Network
- VM to Datastore

Apply Relationships

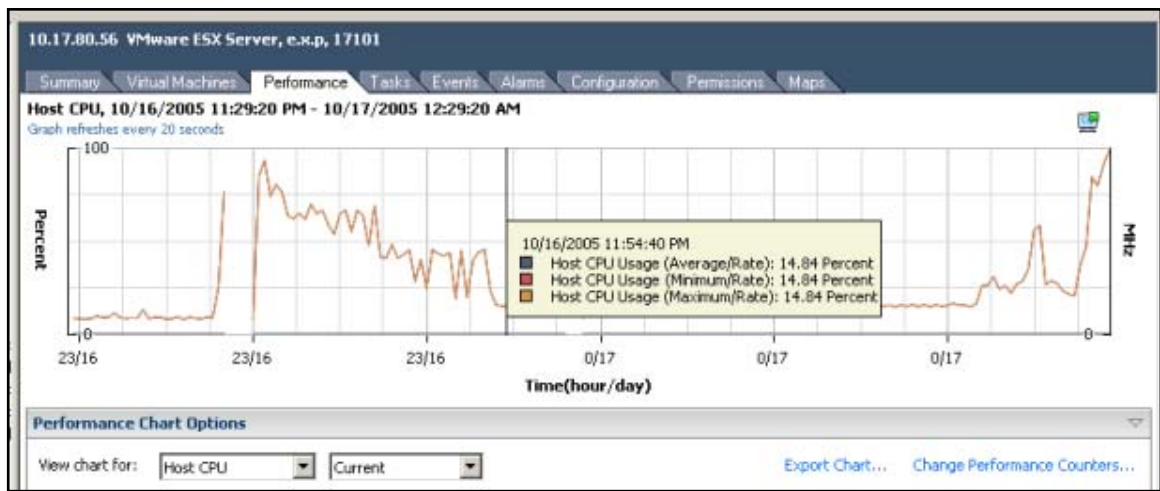


Storage



Performance Charts

- Redesigned to include more data, allow customization
 - Subsumes details previously only in tools such as vmkusage and esxtop
 - Objects in the inventory and their metrics can be selected for display
- Several levels of granularity & time-intervals
 - Real-time statistics at a 20-second sampling rate
 - Archived statistics for the past hour, day, month, etc.
 - OR for a specific time interval specified
- Full exportable to Excel or HTML format





Storage



Optionen für das Performancechart

CPU

Description	Units
<input checked="" type="checkbox"/> CPU Usage (Average/Rate)	Percent
<input type="checkbox"/> CPU Usage in MHz (Average/Rate)	MHz
<input type="checkbox"/> CPU Guaranteed	Millisecond
<input type="checkbox"/> CPU Extra	Millisecond
<input type="checkbox"/> CPU Ready	Millisecond
<input type="checkbox"/> CPU System	Millisecond
<input type="checkbox"/> CPU Wait	Millisecond

Network

Description	Units
<input checked="" type="checkbox"/> Network Usage (Average/Rate)	KBps
<input checked="" type="checkbox"/> Network Data Transmit Rate	KBps
<input type="checkbox"/> Network Packets Transmitted	Number
<input type="checkbox"/> Network Packets Received	Number
<input checked="" type="checkbox"/> Network Data Receive Rate	KBps

Disk

Description	Units
<input checked="" type="checkbox"/> Disk Read Rate	KBps
<input checked="" type="checkbox"/> Disk Write Rate	KBps
<input checked="" type="checkbox"/> Disk Usage (Average/Rate)	KBps
<input type="checkbox"/> Disk Write Requests	Number
<input type="checkbox"/> Disk Read Requests	Number

CPU for Resource Pool

Description	Units
<input type="checkbox"/> CPU Throttled (15 min. average)	Percent
<input type="checkbox"/> CPU Running (1 min. peak)	Percent
<input type="checkbox"/> CPU Running (5 min. peak)	Percent
<input type="checkbox"/> CPU Throttled (1 min. average)	Percent
<input type="checkbox"/> CPU Active (15 min. peak)	Percent
<input type="checkbox"/> CPU Throttled (5 min. average)	Percent
<input type="checkbox"/> CPU Running (15 min. average)	Percent
<input type="checkbox"/> Group CPU Sample Count	Number
<input type="checkbox"/> CPU Active (1 min. peak)	Percent
<input type="checkbox"/> CPU Running (1 min. average)	Percent
<input checked="" type="checkbox"/> CPU Active (5 min. peak)	Percent
<input checked="" type="checkbox"/> CPU Running (5 min. average)	Percent
<input type="checkbox"/> CPU Running (15 min. peak)	Percent
<input type="checkbox"/> Group CPU Sample Period	Millisecond
<input type="checkbox"/> CPU Active (1 min. average)	Percent
<input checked="" type="checkbox"/> CPU Active (5 min. average)	Percent
<input type="checkbox"/> CPU Active (15 min. average)	Percent

Memory

Description	Units
<input type="checkbox"/> Memory Swap In (Average/Absolute)	KB
<input type="checkbox"/> Memory Balloon Target (Average/Absolute)	KB
<input checked="" type="checkbox"/> Memory Balloon (Average/Absolute)	KB
<input type="checkbox"/> Memory Swap Out (Average/Absolute)	KB
<input type="checkbox"/> Memory Usage (Average/Absolute)	Percent
<input type="checkbox"/> Memory Overhead (Average/Absolute)	KB
<input type="checkbox"/> Memory Zero (Average/Absolute)	KB
<input checked="" type="checkbox"/> Memory Active (Average/Absolute)	KB
<input type="checkbox"/> Memory Shared (Average/Absolute)	KB
<input checked="" type="checkbox"/> Memory Granted (Average/Absolute)	KB
<input type="checkbox"/> Memory Swap Target (Average/Absolute)	KB
<input type="checkbox"/> Memory Swapped (Average/Absolute)	KB

System

Description	Units
<input type="checkbox"/> Heartbeat	Number
<input checked="" type="checkbox"/> Uptime	Second





Storage



VC2-Server als Lizenz-Server für die VI

10.17.25.45 - Virtual Infrastructure Client

File Edit View Inventory Administration Help

Inventory Scheduled Tasks Events Admin Maps

Roles Sessions Licenses System Logs

VirtualCenter License Source: 27000@license-1.eng.vmware.com [Host Configuration...](#)

License Feature	Cost	Remaining	Total
VirtualCenter 2.0	1/Server	652	750
ESXHOST_base	1/CPU Package	1200	1200
ESXHOST_capacity	1/Server	1196	1200
VMOTION_base	1/CPU Package	1200	1200
VMOTION_capacity	1/Server	1196	1200
DAS_base	1/CPU Package	1200	1200
DAS_capacity	1/Server	1200	1200
DRS_base	1/CPU Package	1200	1200
DRS_capacity	1/Server	1200	1200
VirtualCenter ESX Server m...	1/CPU Package	9258	10000
VMotion	1/CPU Package	836	1200
VirtualCenter HA	1/CPU Package	1144	1200
VirtualCenter DRS	1/CPU Package	1060	1200
VirtualCenter GSX Server m...	1/Server	1200	1200
ESX Server 3.0 Enterprise	1/Server	8632	10000
Up to 4-way virtual SMP	1/CPU Package	8684	10000
ESX Consolidated Backup	1/CPU Package	8694	10000
ESX Server 3.0 Standard	1/Server	1200	1200

Name

- pmstaff-esx1.eng.vmware.com
- pmstaff-esx2.eng.vmware.com

Host Edition: ESX Server 3.0 Enterprise

iSCSI Usage
NAS Usage
SAN Usage

VirtualCenter ESX Server management Licensed for 2 CPUs
VMotion Not Used
VirtualCenter DRS Licensed for 2 CPUs
VirtualCenter HA Licensed for 2 CPUs
Up to 4-way virtual SMP Licensed for 2 CPUs
ESX Consolidated Backup Licensed for 2 CPUs

Recent Tasks

Name	Target	Status	Reason	Time
Generate Diagnostic Bundles		33%	Administrator	4/22/2006 2:20:44 PM

Tasks 1 Alarms

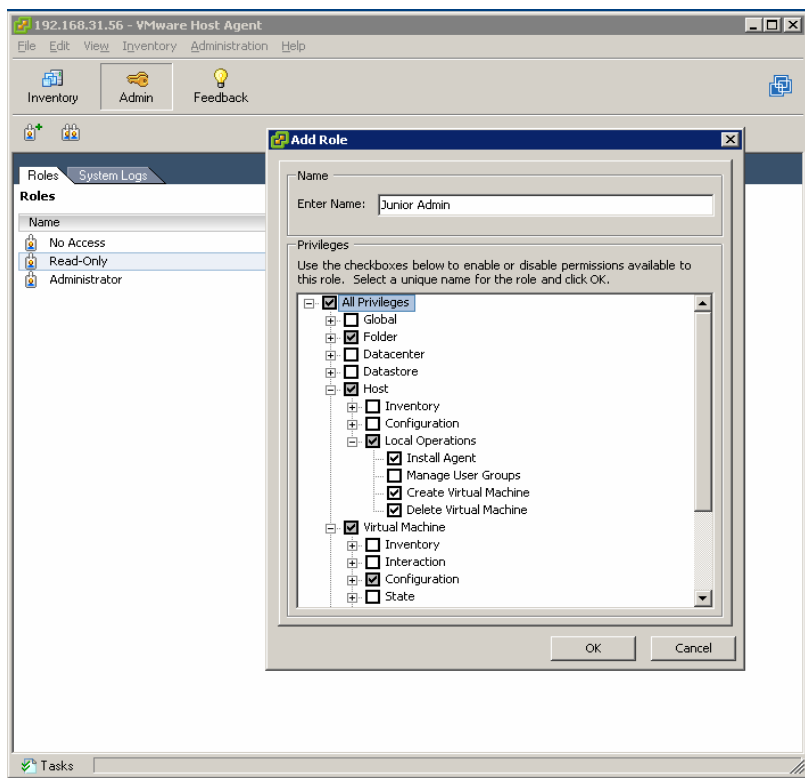


Storage



User-Rollen

- Fest definierte Rollen (Nicht Änderbar)
 - No Access
 - Read – Only
 - Administrator
- Eigene Rollen (Frei definierbar)
 - z.B. Administrator für Nachtbetrieb
- User bezogene Rollen (Default-Privilegien die angepasst werden können)
 - VM Administrator
 - Datacenter Administrator
 - VM Provider
 - VM Power User
 - VM User
 - Resource Administrator





Resource Pools (DRS)

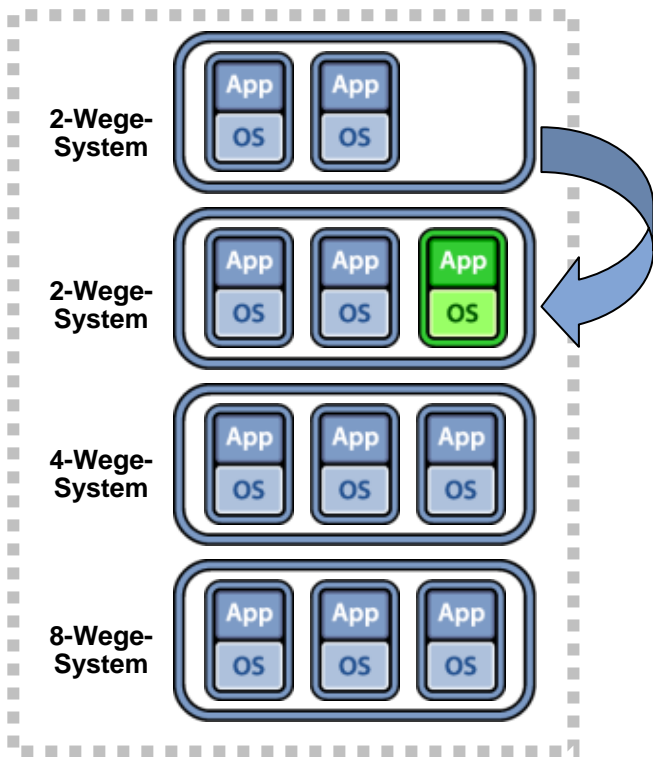


Storage



Dynamische Ressourcenzuweisung (DRS)

Server-Farm



- Erlaubt manuelle oder automatisches Resourcebalancing in einem DataCenter
 - Optimiert Load-balance über ESX-Hosts.
 - Entscheidet ob, wann und wohin migriert wird.
 - Reagiert auf dynamische Laständerungen
- Als VirtualCenter-Zusatzmodul verfügbar (Lizenz)
- Einflussnehmende Core-Technologien
 - VMotion
 - Dynamic Resource Management
- Erlaubt Cluster weites Resource Management
 - Arbeitet über eine Gruppe von Hosts, wird als Cluster bezeichnet.



Storage

Storage



Wo kann DRS helfen

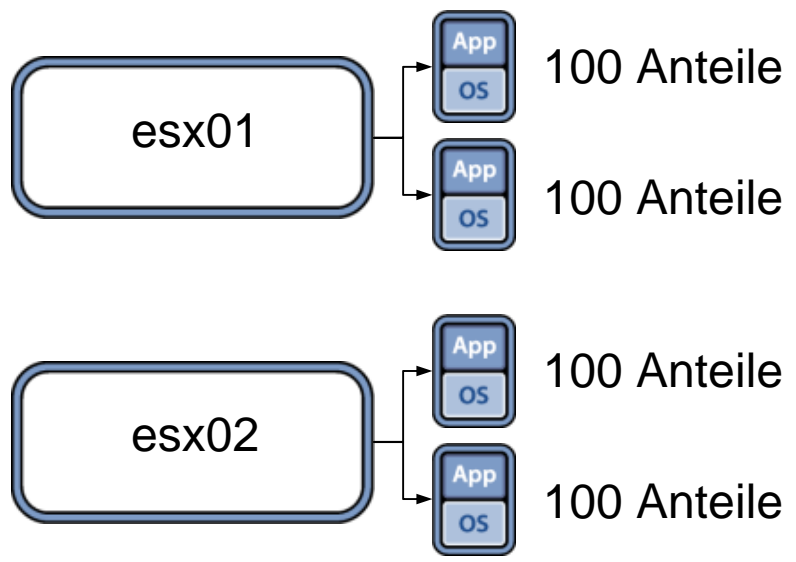
- DRS managed variable Last
 - Workloads sind oft dynamisch, Zeitabhängig
 - Schnell ändernde Last Bedarfsabhängig
- DRS erlaubt die Administration von vielen VM's
 - Hirarchische Organistation
 - Delegierte Administration
- DRS hilft bei der Umsetzung von Utility Computing
 - Abkehr von individuellen Hosts
 - Hinwendung zu kommulierten Ressourcen Pools (Cluster)



Storage



Ressourcen-Zuteilung heute



Hochflexible Ressourcen-Zuteilung für End-User-Management

Second-Level-Administratoren und Power-Users müssen Zugriff auf den gesamten ESX-Server haben, um neue virtuelle Rechner zu versorgen

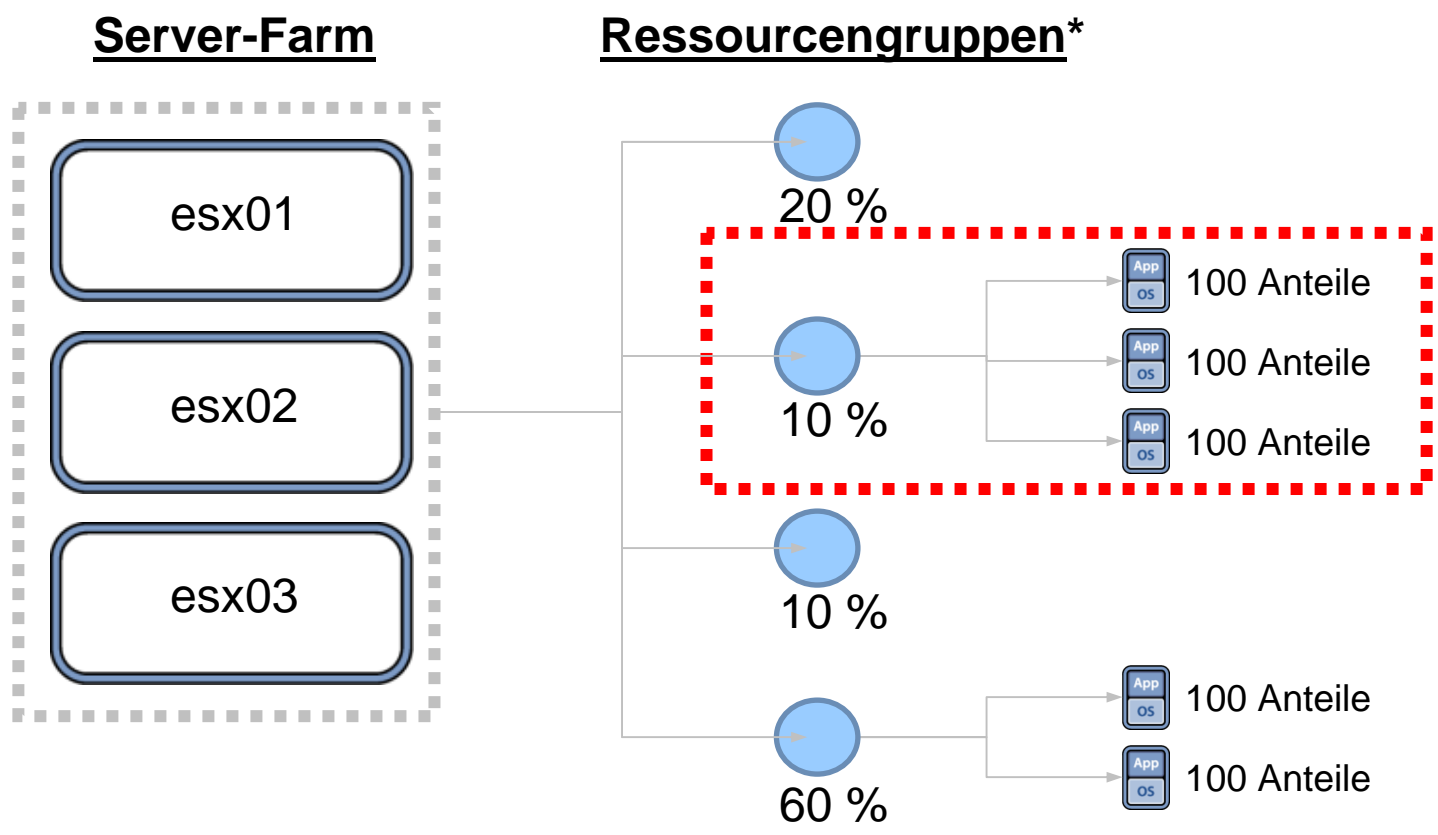
Individuelle ESX-Server sind die Bausteine für die Ressourcenverwaltung



Storage



DRS-Ressourcen-Zuteilung



*Ressourcengruppen werden über Anteile definiert



Hochverfügbarkeit (HA)

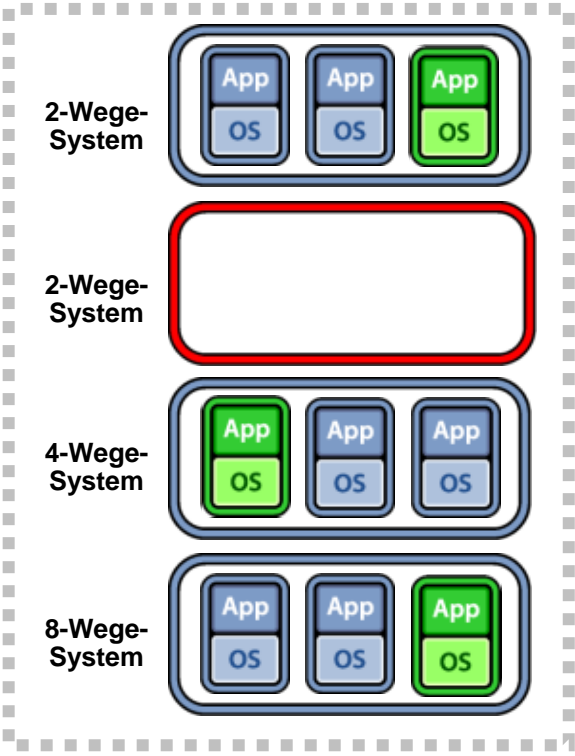


Storage



Dynamischer Verfügbarkeitservice (HA)

Server-Farm



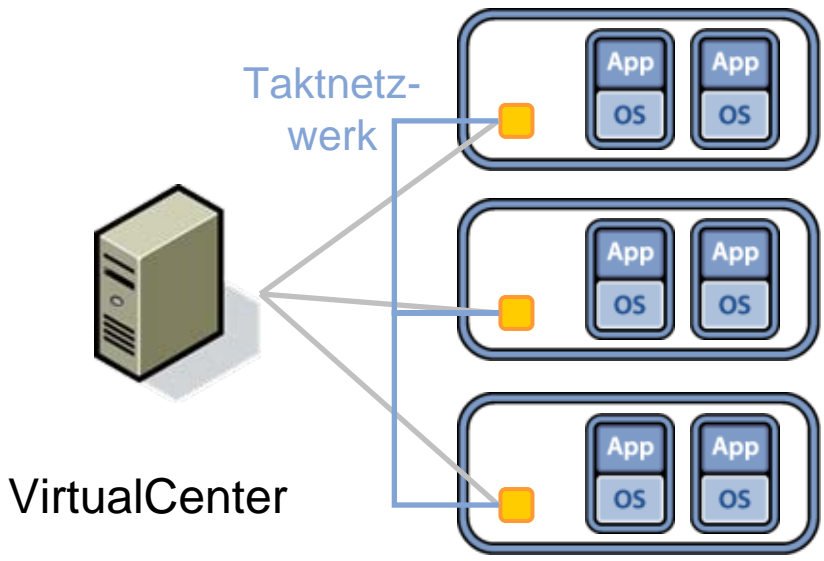
- Entdecken von Hardware-Ausfällen und Ausfällen von virtuellen Rechnern
 - Automatischer Neustart von ausgewählten virtuellen Rechnern
 - Intelligente Zuweisung mit DRS
 - Erfordert geteilten Speicher
- Eingebaute Alternative zu Clustering (für ausgewählte Anwendungen)
- Als VirtualCenter-Zusatzmodul erhältlich



Storage



HA: Konfigurierung



Agenten auf ESX-Servern halten Taktnetzwerk aufrecht

Automatische Installation und Konfigurierung über VirtualCenter

Nach anfänglicher Konfigurierung unabhängig von VirtualCenter

Verwendung von DRS-Algorithmen zur Ermittlung von optimaler Zuweisung



Storage

Storage



Integration von HA mit VC und DRS

- HA und VirtualCenter
 - Ausschalten einer VM wird nicht als Fehler gewertet
 - Ausgeschaltete und entsprechend Markierte VM's werden nicht mit Failover behandelt
 - HA ist in der Lage eine VM zu restarten auf dem ursprünglichen Host, einem definierten Zielhost oder einem anderen verfügbaren Host (wenn beide Hosts wegfallen).
- HA und DRS
 - HA erste Priorität ist das Restarten von fehlerhaften VM's
 - DRS korrigiert nicht optimale Auslastungen (Priorität hat das Loadbalancing über Cluster)

DRS + HA = proactive + reactive solution



Consolidated Backup (VCB)

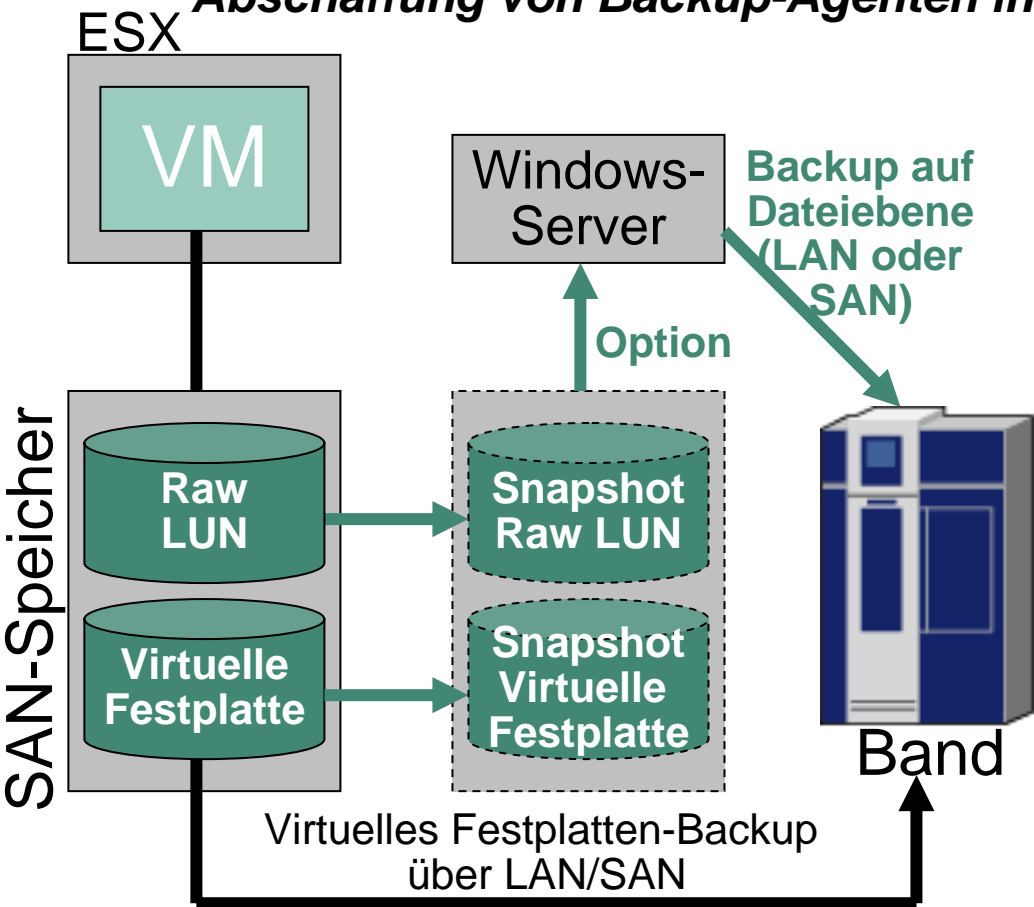


Storage



Konsolidiertes Backup

Abschaffung von Backup-Agenten in allen VM; Vereinfachung von Backup



VSnap

- Für gesamtes Dateisystem einheitlicher Online-Snapshot von virtuellem Laufwerk
- Fähigkeit zu inkrementellen Snapshots
- „Virtuelles LUN-Masking“ auf physischem Server für Backup auf Dateiebene
- Verwendung von vorhandenen Backup-Produkten für Verwaltung von Backup auf Dateiebene
- Entfernung von Backup-Last von Produktionsserver



Storage

Storage



Funktionsablauf Backup

- Backup-Proxy
 - Backupsoftware stösst Backup an (Scheduler oder Manuell)
 - VCB Integrationmodul startet Prebackup-Script
 - VCB veranlasst die hostd des ESX-Hosts die betreffende VM zu stoppen
- ESX-Host
 - Hostd veranlasst die VM-Tools das Filesystem der VM zu stoppen
 - Hostd snapshotet die Disks (vmdk und Raw) der betreffenden VM
 - VM-Tools gibt das Filesystem wieder frei
- Backup-Proxy
 - VCB-Framework mounted den Snapshot (Virtualdisk)
 - Backupsoftware führt das Backup der ausgewählten Files durch
 - VCB startet das Post Backupsript



Storage

Storage



Restore

- Centralized Restore
 - Backupagent ist nur auf dem Backup-Proxy
 - Restore vom Backupstore auf den Backup-Proxy
 - Copy der Files über CIFS-Share zur VM
- Per Group Restore
 - Backupagent auf einer VM pro Backupgruppe
 - Restore vom Backupstore zur VM mit Backupagent
 - Copy der Files über CIFS-Share von der VM zu den VM's der Gruppe
- Self-Service Restore
 - Backupagent auf allen VM's
 - Restore vom Backupstore direkt auf die betreffende VM



Storage



Vergleich der Restoremethoden

Restore Methode	Vorteile	Nachteile
Centralized Backup	Minimale Anzahl von Agenten die zu managen sind	Administrator muss Restore auf File-Level durchführen
Per Group Backup	Restore kann delegiert werden. Guter Kompromiss zwischen Anzahl Agenten und „Ease of restore“	Restore muss über einen Zwischenschritt erfolgen
Self-Service	Unabhängiges Restore für jede VM	Jede VM benötigt einen eigenen Agenten



Storage

Storage



VCB Integrationen (1)

- Gruppe 1 Integrationen von VMWare
 - Nur Basisintegration (Commandline)
 - Pre- und Postscripts
 - Produkte:
 - Symantec/Veritas NetBackup und BackupExec
 - Legato Networker
 - Tivoli Storage Manager (TSM)
 - CommVault
- Gruppe 2 Komitment eigene VCB-Integrationen zu erstellen
 - Produkte
 - HP DataProtector
 - SyncSort
 - Atempo
 - BakBone
 - Danz
 - Innovation Data Processing



Storage

Storage



VCB Integrationen (2)

- Gruppe 3: Kein Komitment eigene VCB-Integrationen zu erstellen oder Integration durch VMWare
 - Produkte
 - CA Brightstore
 - Vizioncore



Storage



ESX-Ranger Pro (Alternative zu VCB)

- Live Backup Of ESX Server Guests '.VMDK' Files While In Use
- Automatically Compresses Disk '.DSK' Files
- Backup Configuration '.VMX' Files
- Runs From A Central Windows Host
- No Manual Linux or PERL Commands Needed, No Complex Scripts Needed
- Customizable output of backup file names, Customizable output location of temporary staging files
- Automatic restore to original source ESX Server from command line interface
- Automatic detection of destination and source free disk space
- No Linux Or Windows Backup agents



Migration nach ESX 3 / VC 2



Storage

Storage



Migration Steps

- Backup VC DB , ESX Servers and VM
- Upgrade VC 1.x to VC 2.x
 - ESX 2.x can still be managed from VC 2.x
 - DB will be modified – no Rollback (Save DB!!!)
Access DB is no longer not supportet – use real SQL Server
 - Check it VC Service in 1.x was started with SystemAcount or NN
In some cases W2K3 SP1 did not allow VC Service to start with SystemAccount. Use same Policy with VC 2.x!!!
- Update ESX Servers (“in Place” or “Migration update”)
- Update Storage vmfs2 to vmfs3 (stop all VM)
- Update virtual Hardware from VM2 to VM3
- Update Tools



Storage

Storage



Migration ESX

- “in Place” Migration
 - Pro – no additional Servers and Disk Resources needed
 - Cons – longer downtime of BC VM, old SW on COS 2.x...
- “Migration update”
 - Pro – one by one migration of VM can be made
 - Cons – all VM have to be copied to new Storage (vmfs3)
- Unbedingt beachten für die Migrationsplanung
http://www.vmware.com/pdf/vi3_installation_guide.pdf



Storage



**Danke
für Ihre Aufmerksamkeit**